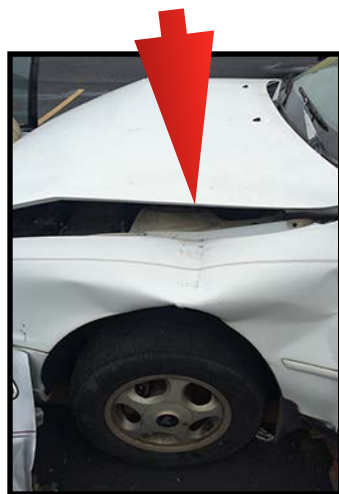
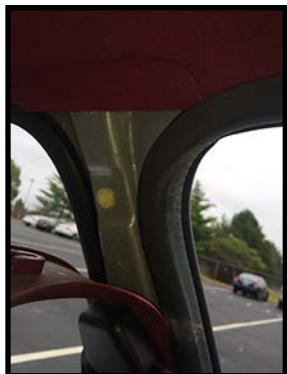


## Back to Basics

### Vehicle Extrication-Dash Lift



To lift the dash, several relief cuts or depressions are needed to facilitate the lift. The front quarter panel can be cut or smashed with the spreaders, along with cuts at the A post and the hinge assembly of the door



After making the cuts, insert the spreaders into the cut along the door hinge assembly and lift, a necessary lift is only what is needed for patient extraction from the vehicle

Always “peel-n-peek” behind the plastic trim to ensure you are not cutting through an air bag cylinder



Start by stabilizing the vehicle, if a dash lift is needed box crib below the rocker panel to allow for the dash to “lift”

